

Perquimans County Convenience Sites

Open Mon. – Sat. 7 AM – 7 PM & Sun 1 PM– 6 PM

Closed Thursdays

NEW IN 2009/2010 — The sites will close at 5:00 PM Mon.—Sat.

from Nov. 1, 2009 - March 13, 2010

Swap shops are open during daylight hours only.

- **New Hope Site:** 100 Deep Creek Road/State Road 1300 (New Hope Rd. and Deep Creek Rd.) 264-4281
- **Hwy. 17 North Site:** 1430 Ocean Highway/US 17 north of Hertford 264-3016
- **Hwy. 17 South Site:** 100 Ocean Highway/US 17 south of Hertford (behind Allen's Chevron) 426-4892
- **Hertford Site:** 500 Center Hill Road/State Road 1110 north of Hertford 426-1058
- **Belvidere Site:** 200 Sandy Cross Road, Belvidere (State Road 1001) 297-2629

Perquimans Chowan Gates (PCG) Landfill and Transfer Station
(252) 297-3300

Mon. – Fri. 8 AM – 4 PM 759 Perry's Bridge Rd. Belvidere

Call if you have questions about the county convenience sites, the landfill and transfer station, construction debris, pallets, yard debris, large quantities of waste, tires, gasoline, paint, or other special wastes.

County Web: <http://www.co.perquimans.nc.us/index.php?page=departments&userid=58>

Town Services

Town of Hertford (252)426-1969

Waste Collections are Tuesday and Wednesday

Recycling is every Thursday

Yard waste collections are Monday and Friday

Town of Winfall (252)426-5015

Waste Collection is Wednesday

Recycling is every other Thursday



Recycling Saves - natural resources, pollution, energy, & disposal fees
Recycling Pays - recycling creates jobs, provides raw materials for manufacturing, and pays revenues

Throwing away one aluminum can is like pouring out the energy in 6 ounces of gasoline!

Learn More: www.p2pays.org <http://earth911.com/>

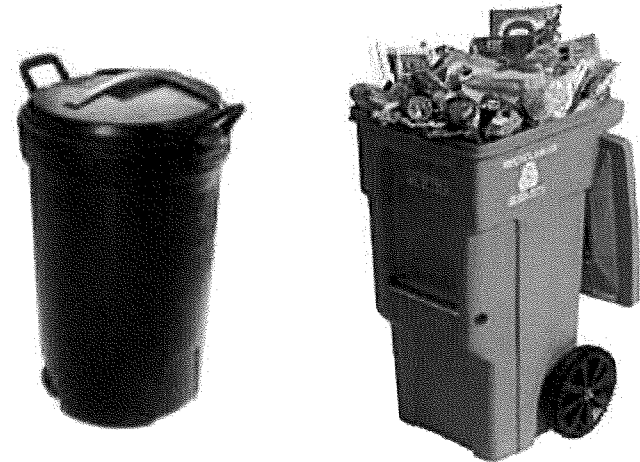
www.epa.gov/epawaste/conserve/rrr/recycle

Printed on recycled paper

Perquimans County

Town of Winfall

Town of Hertford



Solid Waste and Recycling Programs

Perquimans County Convenience Sites

Site locations and hours of operation are on the back page.

Residents can bring all of these materials to the sites:

- recyclables
- yard waste
- scrap metals & appliances
- furnishings
- household waste
- motor oil, oil filters & and antifreeze



Tires should be left at the dealer where the new tires are purchased. Tires are also accepted at PCG Landfill at no charge.



Electronics are accepted at the PCG Landfill.

The swap shops are great places to bring usable tools, household items, toys, etc. so they can be reused.



Town residents may use the county convenience sites as needed. Businesses may bring recyclables to the sites.

Put all of these same recyclable materials into the towns' carts plus add glass bottles and jars.



No plastic bags in the carts, please! All plastic bottles and jugs are accepted. Rinse cans and bottles & remove lids. No ceramics or window glass.

Please put these into the RECYCLING COMPACTOR at the county convenience sites.

- All plastic bottles & jugs
- Cardboard
- Aluminum Cans
- Steel Cans
- Newspaper
- Magazines, Catalogs
- Mail, Office paper
- Paperboard (cereal, shoe boxes)
- Paper bags, Phone books

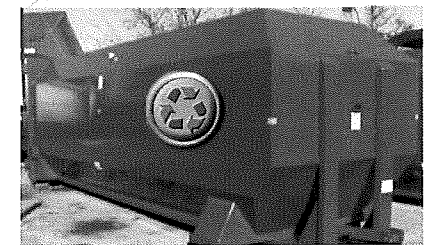


Please rinse cans and bottles, and remove the lids from glass and plastics. No shredded paper. No plastic bags, tubs, cups, toys, plates, buckets or Styrofoam.

Recycle all of these!



At the sites, put glass into the separate glass container. All colors can go together. Include window glass and ceramics. **Thanks for Recycling!**



Recycling Compactor