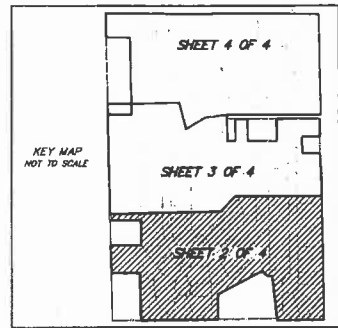
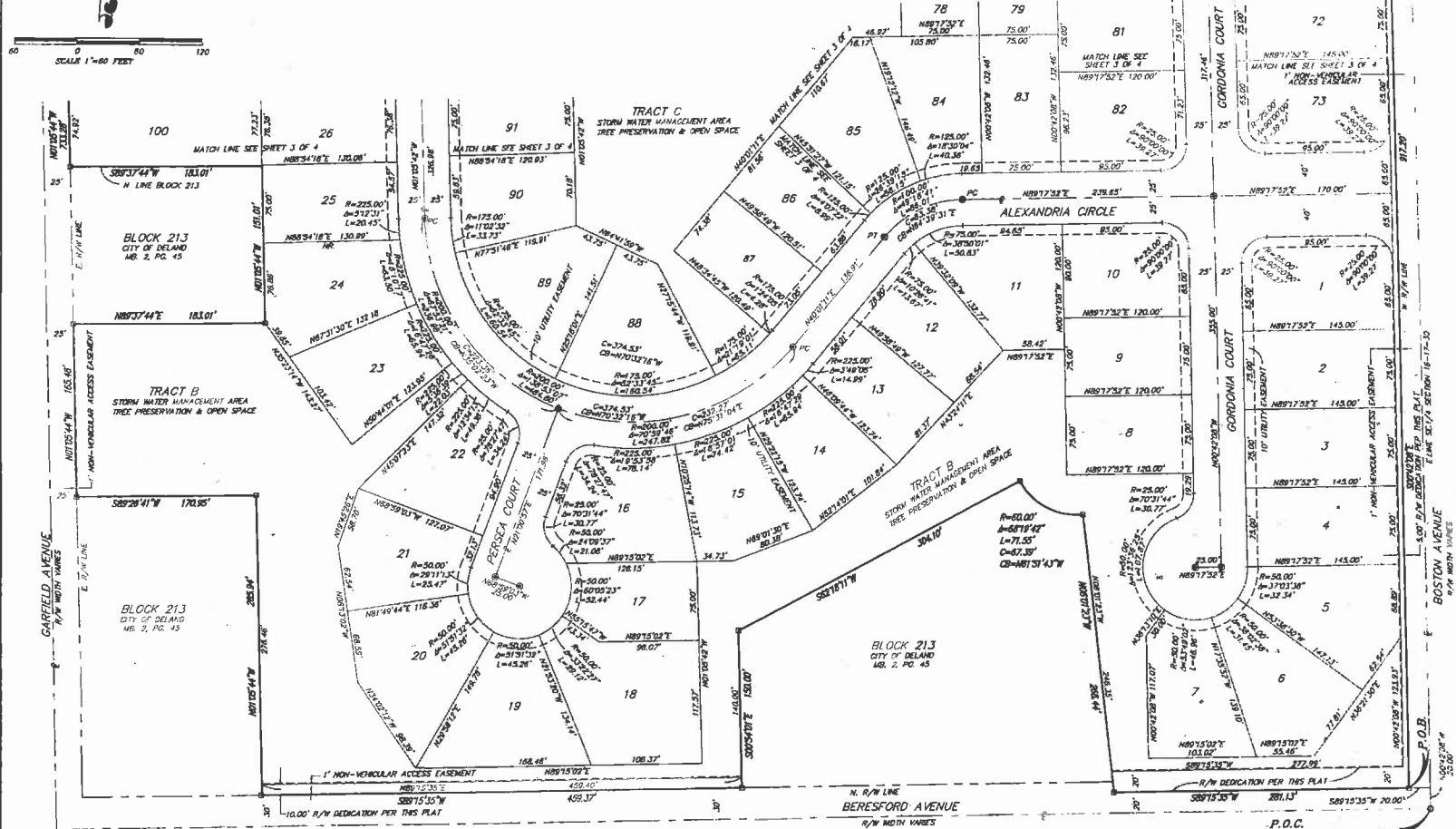


ALEXANDRIA POINTE

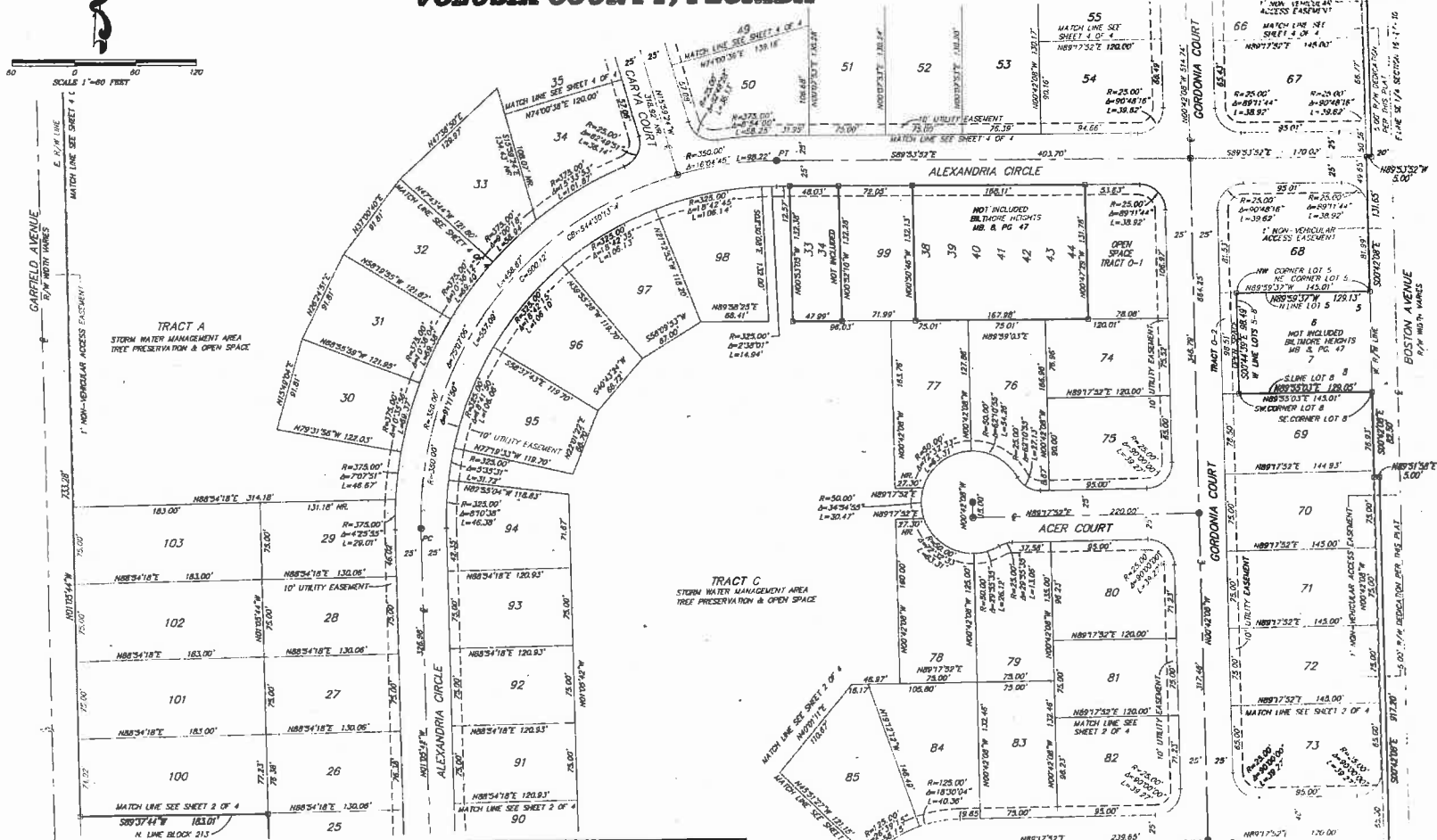
**LOCATED IN SECTION 16, TOWNSHIP 17 SOUTH, RANGE 30 EAST
CITY OF DELAND
VOLUSIA COUNTY, FLORIDA**



- LEGEND**
- P.O.C.....POINT OF COMMENCEMENT
 - P.O.B.....POINT OF BEGINNING
 - R.....RADIUS
 - A.....CENTRAL ANGLE
 - L.....ARC LENGTH
 - C.....CHORD LENGTH
 - CB.....CHORD BEARING
 - P.B.....PLAT BOOK
 - MB.....MAP BOOK
 - ORB.....OFFICIAL RECORDS BOOK
 - PG.....PAGE
 - PT.....POINT OF TANGENCY
 - PC.....POINT OF CURVATURE
 - RP.....RADIUS POINT
 - C.....CENTERLINE
 - R/W.....RIGHT-OF-WAY
 - CCR.....CERTIFIED CORNER RECORD
 - NR.....NOT RADIAL

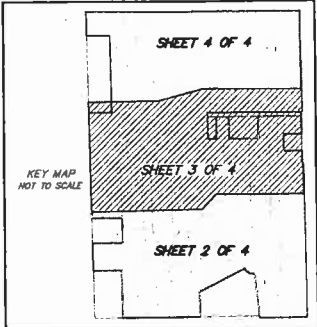
ALEXANDRIA POINTE

LOCATED IN SECTION 16, TOWNSHIP 17 SOUTH, RANGE 30 EAST
CITY OF DELAND
VOLUSIA COUNTY, FLORIDA



LEGEND

- P.O.C..... POINT OF COMMENCEMENT
- P.O.B..... POINT OF BEGINNING
- R..... RADIUS
- A..... CENTRAL ANGLE
- L..... ARC LENGTH
- C..... CHORD LENGTH
- CB..... CHORD BEARING
- PB..... PLAT BOOK
- MB..... MAP BOOK
- OR..... OFFICIAL RECORDS BOOK
- PC..... PAGE
- PT..... POINT OF TANGENCY
- PC..... POINT OF CURVATURE
- RP..... RADIUS POINT
- E..... CENTERLINE
- R/W..... RIGHT-OF-WAY
- CCR..... CERTIFIED CORNER RECORD
- NR..... NOT RADIAL

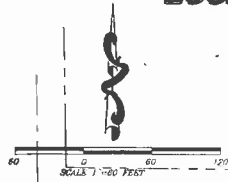


ALEXANDRIA POINTE

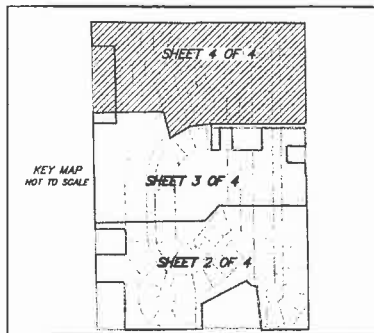
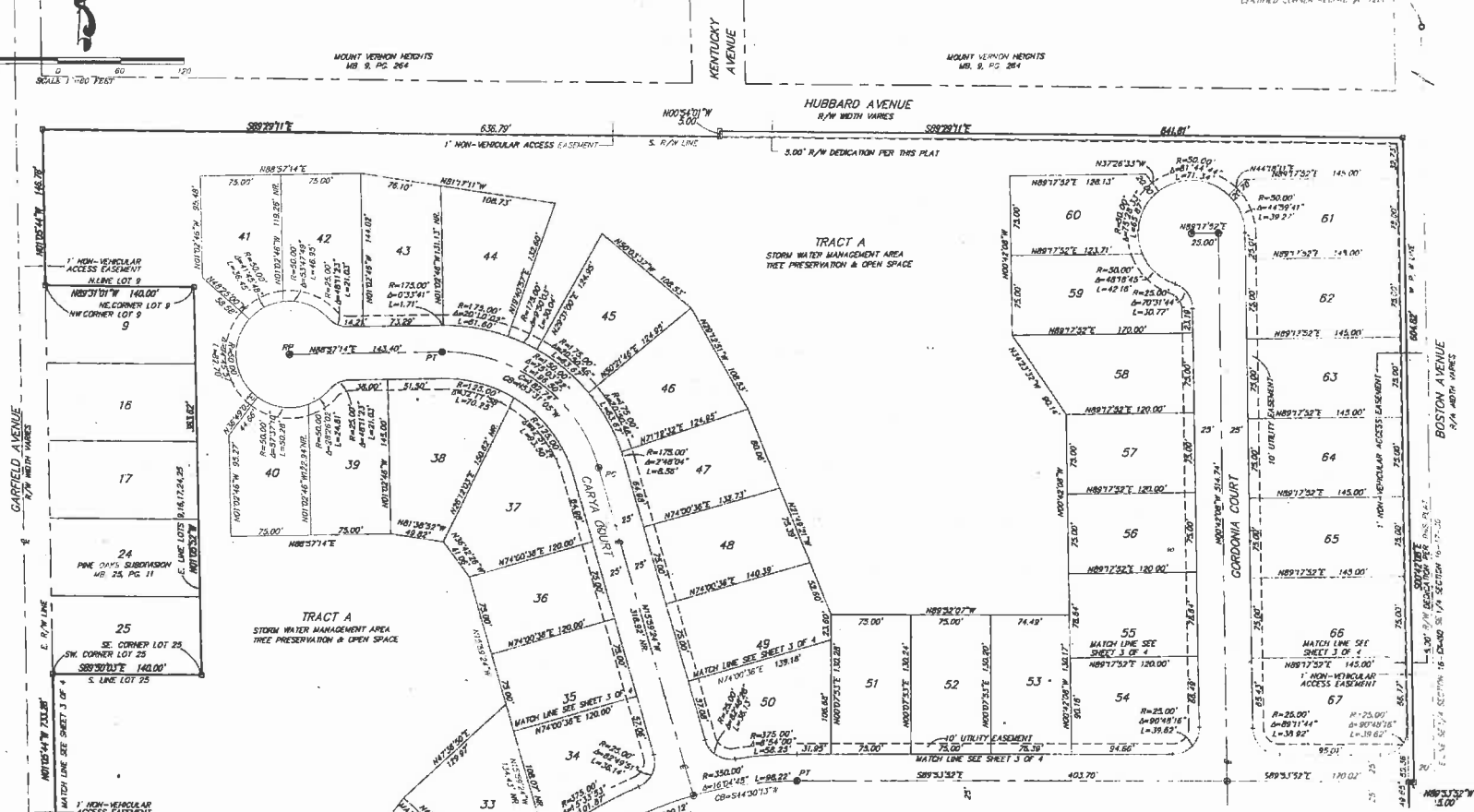
LOCATED IN SECTION 16, TOWNSHIP 17 SOUTH, RANGE 30 EAST
CITY OF DELAND
VOLUSIA COUNTY, FLORIDA

PLAT BOOK **52** PAGE **40**

SHEET 4 OF 4



AS SHOWN ON THE PLAT, THE BOUNDARIES OF THE LOTS ARE TO BE CONSIDERED AS SHOWN ON THIS PLAT.



LEGEND

- P.O.C.....POINT OF COMMENCEMENT
- P.O.B.....POINT OF BEGINNING
- R.....RADIUS
- Δ.....CENTRAL ANGLE
- L.....ARC LENGTH
- C.....CHORD LENGTH
- CB.....CHORD BEARING
- PB.....PLAT BOOK
- MB.....MAP BOOK
- ORB.....OFFICIAL RECORDS BOOK
- PG.....PAGE
- PT.....POINT OF TANGENCY
- PC.....POINT OF CURVATURE
- RP.....RADIUS POINT
- CL.....CENTERLINE
- R/W.....RIGHT-OF-WAY
- CCR.....CERTIFIED CORNER RECORD
- NR.....NOT RADIAL

PEC PROFESSIONAL ENGINEERING CONSULTANTS, INC.
engineers planners surveyors
Suite 1580 - Eola Park Centre 200 East Robinson Street Orlando, Florida 32801 407/442-8612