

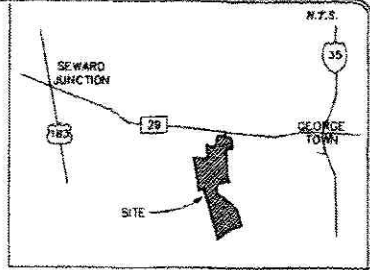
Cabinet S Slide 2.0

GABRIELS OVERLOOK - SECTION ONE

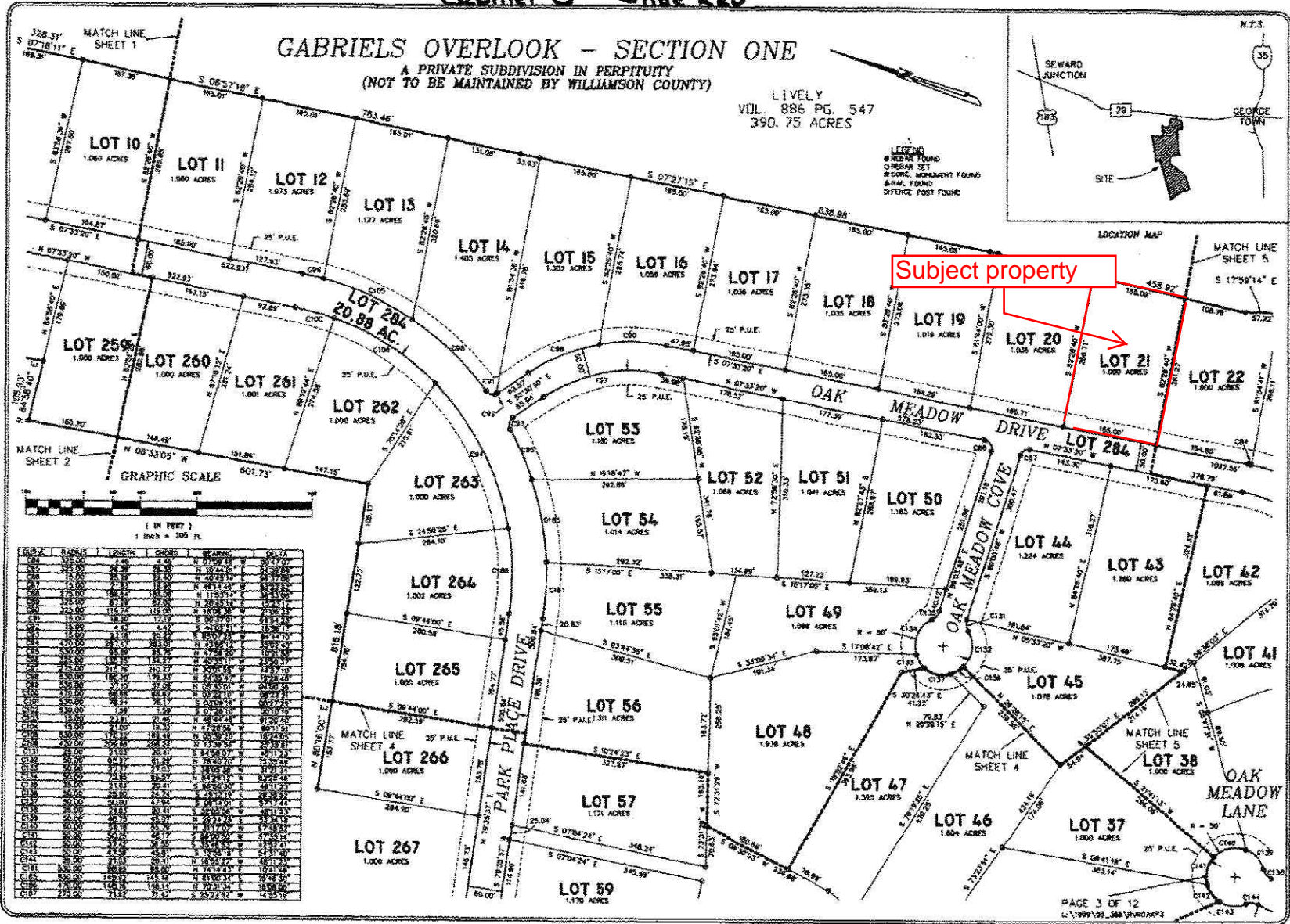
A PRIVATE SUBDIVISION IN PERPETUITY
(NOT TO BE MAINTAINED BY WILLAMSON COUNTY)

LIVELY
VOL. 886 PG. 547
390.75 ACRES

LEGEND
● BEAR FOUND
○ BEAR SET
■ CONC. MONUMENT FOUND
▲ BRAL FOUND
◇ REFERENCE POST FOUND



Subject property



LOT	ACRES	LENGTH	WIDTH	AREA	PERCENT
10	1.060	187.36	183.01	196.83	0.504
11	1.080	185.01	183.01	196.83	0.504
12	1.075	185.01	183.01	196.83	0.504
13	1.127	185.01	183.01	196.83	0.504
14	1.405	185.01	183.01	196.83	0.504
15	1.300	185.01	183.01	196.83	0.504
16	1.056	185.01	183.01	196.83	0.504
17	1.036	185.01	183.01	196.83	0.504
18	1.035	185.01	183.01	196.83	0.504
19	1.019	185.01	183.01	196.83	0.504
20	1.030	185.01	183.01	196.83	0.504
21	1.000	185.01	183.01	196.83	0.504
22	1.000	185.01	183.01	196.83	0.504
23	1.000	185.01	183.01	196.83	0.504
24	1.000	185.01	183.01	196.83	0.504
25	1.000	185.01	183.01	196.83	0.504
26	1.000	185.01	183.01	196.83	0.504
27	1.000	185.01	183.01	196.83	0.504
28	1.000	185.01	183.01	196.83	0.504
29	1.000	185.01	183.01	196.83	0.504
30	1.000	185.01	183.01	196.83	0.504
31	1.000	185.01	183.01	196.83	0.504
32	1.000	185.01	183.01	196.83	0.504
33	1.000	185.01	183.01	196.83	0.504
34	1.000	185.01	183.01	196.83	0.504
35	1.000	185.01	183.01	196.83	0.504
36	1.000	185.01	183.01	196.83	0.504
37	1.000	185.01	183.01	196.83	0.504
38	1.000	185.01	183.01	196.83	0.504
39	1.000	185.01	183.01	196.83	0.504
40	1.000	185.01	183.01	196.83	0.504
41	1.000	185.01	183.01	196.83	0.504
42	1.000	185.01	183.01	196.83	0.504
43	1.000	185.01	183.01	196.83	0.504
44	1.000	185.01	183.01	196.83	0.504
45	1.000	185.01	183.01	196.83	0.504
46	1.000	185.01	183.01	196.83	0.504
47	1.000	185.01	183.01	196.83	0.504
48	1.000	185.01	183.01	196.83	0.504
49	1.000	185.01	183.01	196.83	0.504
50	1.000	185.01	183.01	196.83	0.504
51	1.000	185.01	183.01	196.83	0.504
52	1.000	185.01	183.01	196.83	0.504
53	1.000	185.01	183.01	196.83	0.504
54	1.000	185.01	183.01	196.83	0.504
55	1.000	185.01	183.01	196.83	0.504
56	1.000	185.01	183.01	196.83	0.504
57	1.000	185.01	183.01	196.83	0.504
58	1.000	185.01	183.01	196.83	0.504
59	1.000	185.01	183.01	196.83	0.504